

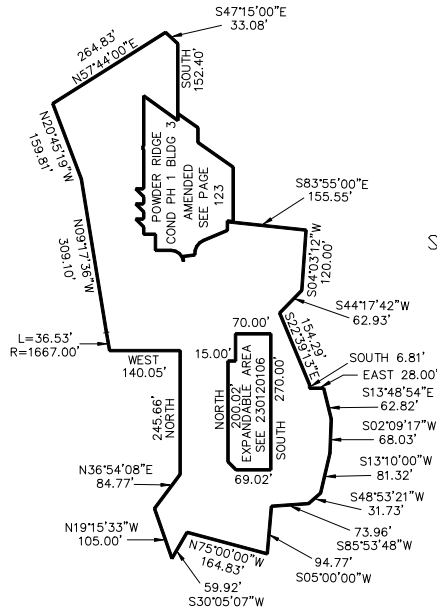
PART OF SECTION 6, T.7N., R.2E., S.L.B & M.
POWDER RIDGE CONDOMINIUMS PHASE 1 AMENDED
 IN WEBER COUNTY
 SCALE 1" = 200'

122

TAXING UNIT: 227

STRUCTURE NUMBER	4-PLEX DESG.	UNIT	SERIAL NUMBER	NAMES OF OWNERSHIP	STRUCTURE NUMBER	4-PLEX DESG.	UNIT	SERIAL NUMBER	NAMES OF OWNERSHIP	
2	A	1	231220001	POWDER MOUNTAIN PROPERTIES LLC	9	A	1	231220019	POWDER MOUNTAIN PROPERTIES LLC	
		2	231220002	POWDER MOUNTAIN PROPERTIES LLC			2	231220020	POWDER MOUNTAIN PROPERTIES LLC	
		3	231220003	POWDER MOUNTAIN PROPERTIES LLC			3	231220021	POWDER MOUNTAIN PROPERTIES LLC	
		4	231220004	POWDER MOUNTAIN PROPERTIES LLC			4	231220022	POWDER RIDGE VILLAGE OWNERS ASSN INC	
		5	231220005	POWDER MOUNTAIN PROPERTIES LLC			5	231220023	POWDER RIDGE VILLAGE OWNERS ASSN INC	
		6	231220006	POWDER MOUNTAIN PROPERTIES LLC			6	231220024	POWDER RIDGE VILLAGE OWNERS ASSN INC	
	B	1	231220007	POWDER MOUNTAIN PROPERTIES LLC (BRENT BOURGEOIS ETAL-CLAIMS-)	10	A	1	231220025	POWDER MOUNTAIN PROPERTIES LLC	
		2	231220008	POWDER MOUNTAIN PROPERTIES LLC			2	231220026	POWDER MOUNTAIN PROPERTIES LLC	
		3	231220009	POWDER MOUNTAIN PROPERTIES LLC			3	231220027	POWDER MOUNTAIN PROPERTIES LLC	
		4	231220010	POWDER MOUNTAIN PROPERTIES LLC			4	231220028	POWDER MOUNTAIN PROPERTIES LLC	
		5	231220011	POWDER MOUNTAIN PROPERTIES LLC		B	1*	231220029	POWDER MOUNTAIN PROPERTIES LLC	
		6	231220012	POWDER MOUNTAIN PROPERTIES LLC			2*	231220030	POWDER MOUNTAIN PROPERTIES LLC	
	C	1	231220013	POWDER MOUNTAIN PROPERTIES LLC			3	231220031	POWDER MOUNTAIN PROPERTIES LLC	
		2	231220014	POWDER MOUNTAIN PROPERTIES LLC			4	231220032	POWDER MOUNTAIN PROPERTIES LLC	
		3	231220015	POWDER MOUNTAIN PROPERTIES LLC	*AFFIDAVIT E#1998657 15-DEC-2003					
		4	231220016	POWDER MOUNTAIN PROPERTIES LLC						
		5	231220017	POWDER MOUNTAIN PROPERTIES LLC						
		6	231220018	POWDER MOUNTAIN PROPERTIES LLC	COMMON AREA		231220034	COMMON AREA (CHAMONIX CAPITAL I LLC CLAIMS PT)		

SEE PAGE 12



SEE PAGE 12

SEE PAGE 12

FOR COMPLETE ENG DATA SEE
 ORIGINAL DEDICATION PLAT IN
 BOOK 58, PAGES 72 TO 75 OF
 RECORDS.